

# The DORSET SCHOOL of ACTING

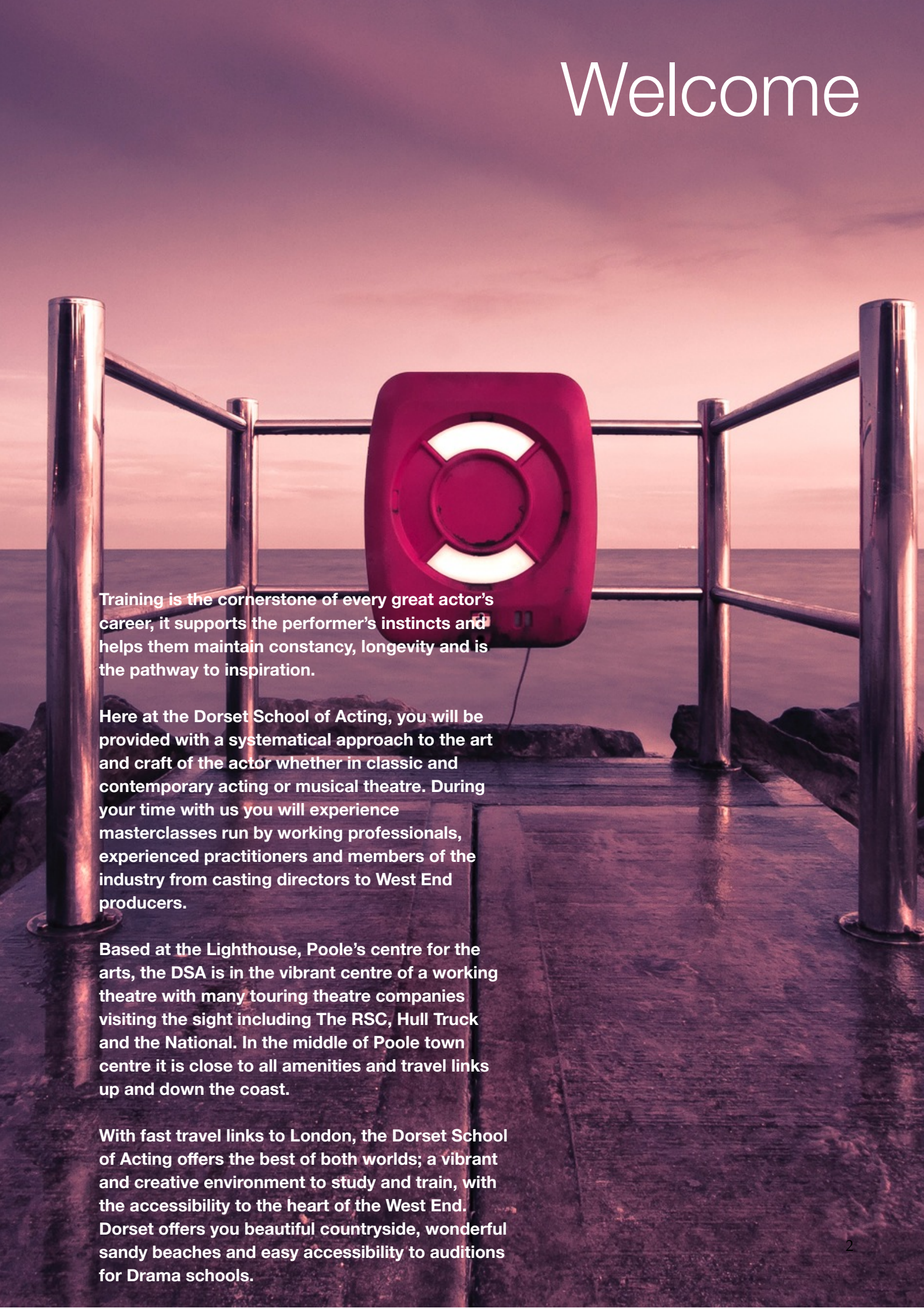
BE BRAVE. BE BRIGHT. BE BRILLIANT

Patron: Dame Harriet Walter



Prospectus 2014

# Welcome

A red lifebuoy is mounted on a metal railing overlooking the ocean at sunset. The scene is bathed in a warm, golden light, with the sun low on the horizon, creating a soft glow over the water and sky. The railing is made of polished metal, and the lifebuoy is a bright red color with a white cross in the center. The overall mood is serene and welcoming.

Training is the cornerstone of every great actor's career, it supports the performer's instincts and helps them maintain constancy, longevity and is the pathway to inspiration.

Here at the Dorset School of Acting, you will be provided with a systematical approach to the art and craft of the actor whether in classic and contemporary acting or musical theatre. During your time with us you will experience masterclasses run by working professionals, experienced practitioners and members of the industry from casting directors to West End producers.

Based at the Lighthouse, Poole's centre for the arts, the DSA is in the vibrant centre of a working theatre with many touring theatre companies visiting the sight including The RSC, Hull Truck and the National. In the middle of Poole town centre it is close to all amenities and travel links up and down the coast.

With fast travel links to London, the Dorset School of Acting offers the best of both worlds; a vibrant and creative environment to study and train, with the accessibility to the heart of the West End. Dorset offers you beautiful countryside, wonderful sandy beaches and easy accessibility to auditions for Drama schools.



# Contents

## **Page**

- 4.** One year course
- 5.** Course outline
- 6.** Qualifications
- 7.** Location
- 8.** Auditions
- 9.** Term dates
- 10.** Information
- 11.** Contact



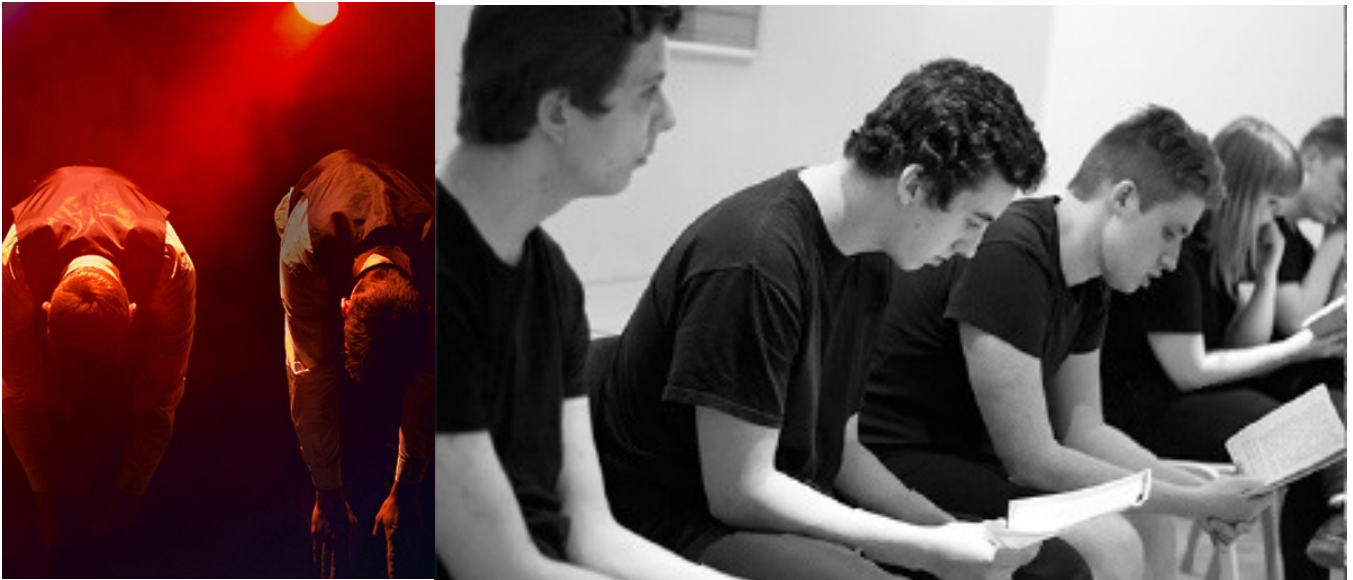
## One Year Course

The one year intensive course is designed for aspiring young actors who wish to prepare themselves for continued training at drama school and for those looking to expand their experience in Acting and Musical Theatre. It also provides an opportunity for those who have previously auditioned for drama schools but have found that they require more practice and experience to be successful in gaining a place.

At the DSA you will work three days full time, at least 20hrs per week including open studio time but not incorporating theatre visits and performances. From Sept - May you will be honing your skills in preparation for either an undergraduate drama school course or the possible progression into a professional career.

Throughout the year you will be taught by practicing professionals, this will include a number of masterclasses given by leading industry practitioners from theatre, film and TV. There will also be the opportunity for students to participate in performances both within the school and at a local professional venue.

During the process your practical studies will be supported with theatre visits to London to provide breadth and understanding to your theatrical experience.



### **Acting**

Over the two semesters you will be taught how to create character and develop the most effective way to create a role using text. Your study will range from working with verse and Sonnets, Shakespearian and contemporary speeches to developing your improvisation and devising skills along with stagecraft.

### **Dance**

It is essential for any performer to be confident in dance and be in control of their body whether focusing on acting or musical theatre. As such you will receive comprehensive training in core movement, ballet, jazz, contemporary and commercial dance including body conditioning and yoga; preparing you fully for the rigors of auditioning for drama school.

### **Voice**

As one of your most important tools as an actor you will receive regular voice classes looking at placement, diction, articulation and projection. You will also learn the basics of Alexander Technique as an invaluable way to centre your voice and achieve the optimum posture.

### **Singing**

Over the two semesters you will study singing technique, learn songs for auditions and be taught how to sing in ensemble; working on how to harmonise with others. You will also be taught acting through song, an invaluable part of performance.

### **Audition Preparation**

In order for you to be fully prepared for continuing training at drama school you will be supported in finding suitable monologues and songs and given advice on the application process. The nature of the course is diagnostic. In order to present you with the best possible chance at gaining a place at drama school you will receive advice during tutorials on which facet of performance would suit you best.

### **Professional studies**

As part of the course you will have the opportunity to take part in seminars outlining how to present yourself as a professional actor for employment, understanding the casting process and how to approach those in the industry.

### **Assessment**

During the course you are continuously assessed by your teachers. Students are informed of their progress and staff expectations through regular tutorials. There will be at least one written assignment each semester and you will be expected to keep a journal.

## Qualifications

As a Trinity registered centre, Dorset School of Acting offers each student the opportunity to take the Trinity College London Diploma in Speech and Drama at Associate Level. This will provide you with a NQF Level 4 qualification, equivalent to the first year of a Degree course and a nationally recognised qualification.

The exam is completely practical and comprises of two sections. The first section is performance based and you are required to perform a number of speeches. The second section is 'Viva voce' which comprises of improvisation and discussions demonstrating your understanding of the acting process and interpretation of the pieces.

This exam is timetabled for the end of the year once the majority of your auditions are complete.





# Location

Poole is situated on the South Coast of England in the beautiful, historic county of Dorset. It has so much to offer from easy access to the Purbecks, the New Forest and the beautiful Dorset countryside with easy access to France and the Channel Islands from Poole Quay.

The historic heart of Poole is centred around its most famous feature, Poole Quay, which has played a key role in the development of the town over the years.

The area's magnificent beaches are amongst the best in Britain, having won the European Blue Flag Award 22 times. There are miles of golden sands stretching from the mouth of Poole Harbour at the famous and fashionable Sandbanks all the way along the coast to Hengistbury Head near Christchurch. The seafront plays

host to a number of sports events each year.

By day the town is a shopper's paradise with a combination of high street favourites and exclusive boutiques. As the sun goes down the nightlife begins to hot up. From West End shows, classical concerts and plays to a wide choice of nightclubs, Bournemouth has it all. At night the town comes alive with a host of fashionable clubs, pubs and exciting nightlife! With a vibrant student community there is plenty of opportunity to socialise.

Not far is Salisbury which not only has the Salisbury Playhouse theatre but also is the home of Stonehenge.

Southampton is less than 40 miles away where the reputable Nuffield theatre is based along with lots of shops, ships and sailing!

Things to do and see here include:

- ☼ Blue flag beaches
- ☼ Vibrant nightlife
- ☼ Poole quay
- ☼ Water sports
- ☼ Sandbanks
- ☼ Brownsea island
- ☼ Mudeford
- ☼ Hardy's wessex
- ☼ Lulworth cove
- ☼ Stonehenge
- ☼ Corfe castle
- ☼ Jurassic coast
- ☼ Ferry to France
- ☼ Nuffield Theatre
- ☼ Salisbury Playhouse





## Auditions

Entry into the Dorset School of Acting is by audition only. It is expected that candidates will have some experience in one of the three disciplines of acting, singing or dancing with potential to be coached in the other two. You will be asked to prepare:

- ☼ 2 contrasting monologues, 1 contemporary, 1 Shakespearean/Jacobean.
- ☼ 2 contrasting songs, at least 1 musical theatre with piano accompaniment in your vocal range.

The audition process may last all day and could also include dance and acting workshops. There will also be an individual interview where you can ask questions. Please wear appropriate and comfortable clothing and footwear and bring a bottle of water with you.

Applications are accepted from September 2013 for entry in September 2014 with a deadline of July 2014 and auditions will begin from January 2014. To apply Please contact us directly by email or phone to request an admissions form. The audition fee is £35 which needs to be submitted with the completed admissions form.

## Fees & funding

The cost for the one year foundation course including the entrance fee for Trinity Guildhall London Associate Diploma (Level 4) for 2014/15 is £4750. If accepted onto the course a deposit of £500 is required and the remaining balance will need to be paid four weeks before the commencement of the course. There is also a £250 fee to cover all theatre visits and travel to London.





## Term dates 2014/15

Term/Holiday	Start date	Finish date
<b>Semester 1</b>	08/09/14	22/10/14
Half term	27/10/14	02/11/14
<b>Semester 1</b>	03/11/14	17/12/14
Christmas holiday	22/12/14	04/01/15
<b>Semester 1</b>	05/01/15	07/01/15
<b>Semester 2</b>	12/01/15	11/02/15
Half term	16/02/15	22/02/15
<b>Semester 2</b>	23/02/15	25/03/15
Easter holiday	30/03/15	12/04/15
<b>Semester 2</b>	13/04/15	13/05/15

# Information

## Auditions will be held at:-

### LIGHTHOUSE

#### Poole's Centre for the Arts

21 Kingland Road  
Poole  
Dorset  
BH15 1UG

**Lighthouse**  
POOLE'S CENTRE FOR THE ARTS

## How to get here:-

**By rail:** National Rail direct from London Waterloo to Poole.

**By car:** From London M3, M27, A31

# Accommodation

The most popular way of finding accommodation is through **HOMESTAY**, an internationally recognised organisation that offers accommodation, meals and laundry service.

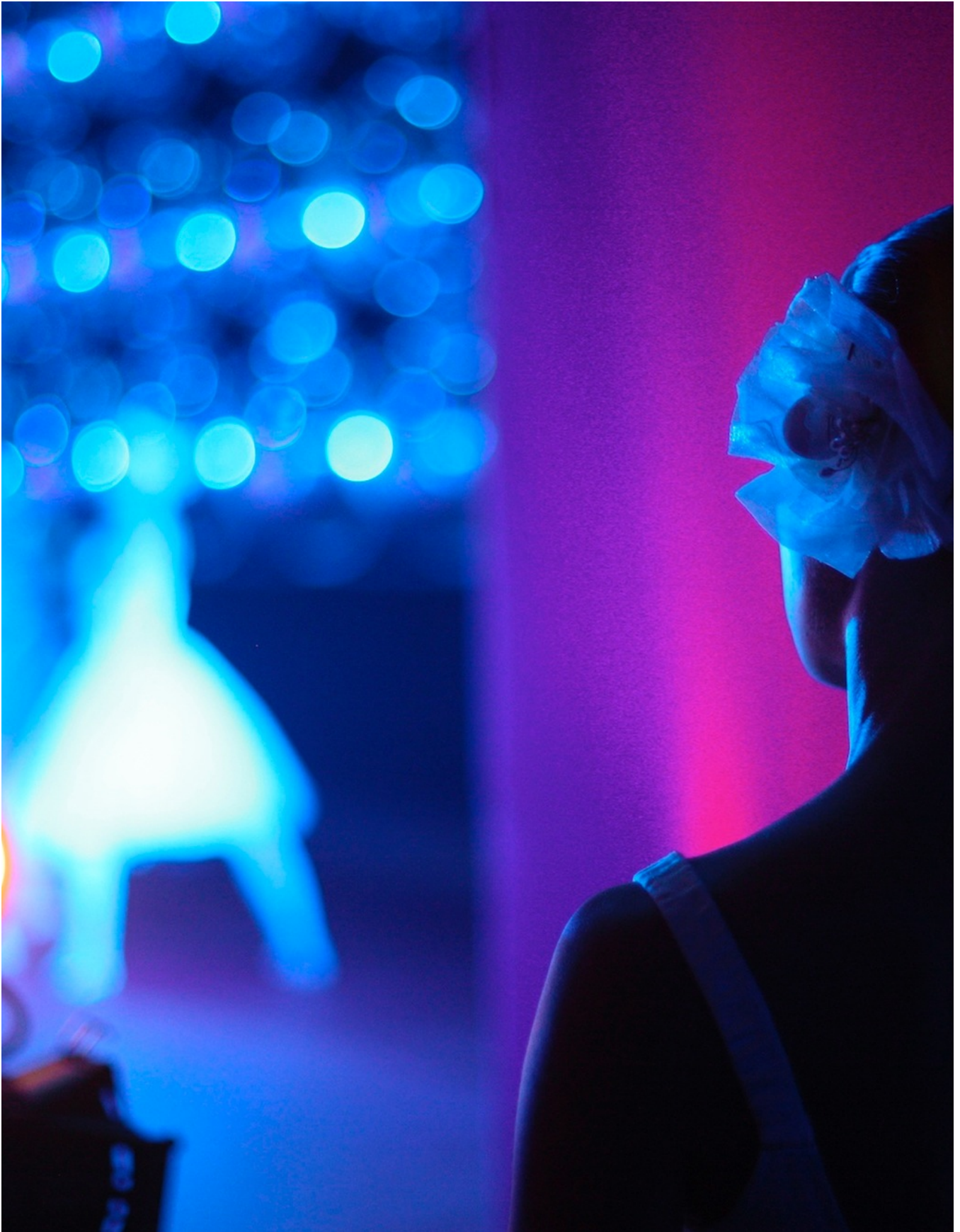
Alternatively **STUDENT STREET** has information about student accommodation available in the area.

Also, please do not hesitate to contact the school direct. We can liaise with relevant companies or individuals to help you find what you're looking for as we also have connections through the local universities accommodation lists for halls of residence.



*The*  
**DORSET**  
**SCHOOL of**  
**ACTING**

BE BRAVE. BE BRIGHT. BE BRILLIANT  
10



The Dorset School of Acting

Lighthouse  
21 Kingland Road,  
Poole  
Dorset  
BH15 1UG

01202 922675  
[admissions@dorsetschoolofacting.co.uk](mailto:admissions@dorsetschoolofacting.co.uk)  
[www.dorsetschoolofacting.co.uk](http://www.dorsetschoolofacting.co.uk)